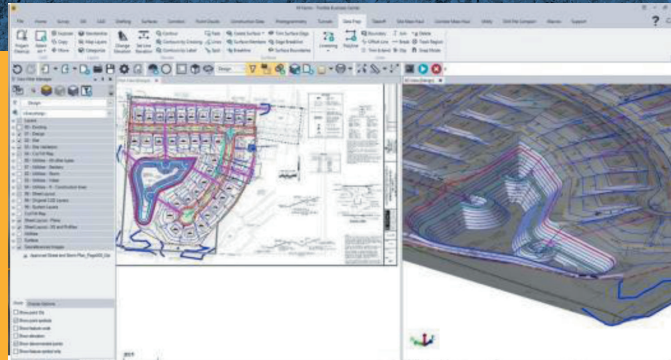
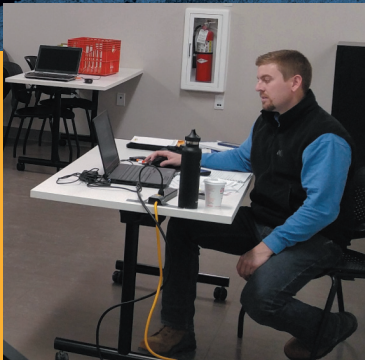


Learn: Trimble Business Center (TBC) SITE MODELING

A virtual classroom led by live instructors for TBC SITE MODELING

SITECH Northeast designed a class for users who wish to build their own 3D surface models. This is a live instructor led class delivered remotely to your computer. Our 4x-2 hour class sessions spaced one week apart will allow us to train on topics without being in a classroom and also avoid the dreaded data overload syndrome.



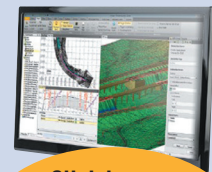
Cost: Attendance is \$320 per student/computer sign-on.

You must register in advance on-line at: www.sitechnortheast.com/events.

Each session begins promptly at 2:00 PM and concludes at 4:00 PM. Electronic course material will be provided along with a 10-day full license code and a certificate at the successful completion of the class.

Topics included but not limited to:

- | | | |
|--|---------------------------|------------------------------|
| Creating Horizontal Alignment Labels | Standardize Layers | Elevate 2D lines to 3D lines |
| Elevate Lines, Contours, and Pads | Track Region Outline | Create Surface |
| Materials and Site Improvement Manager | Trim and Extend Lines | Check and Analyze surface |
| Offset Lines | Importing files | Volume Calculation |
| Project Cleanup | Cleaning CAD files | Exporting files to field |
| | Relayer and Name Linework | |



Click here to load the most current version of TBC on your computer **FOR FREE!**

Although this class is virtual, we have a **6 student limit** to ensure an appropriate teacher/student ratio. Please go on-line to register for each session.

www.sitechnortheast.com/events

Questions/Additional information? Contact: Sitechtraining@sitechnortheast.com



SITECH NORTHEAST

www.sitechnortheast.com

- Videos
- Product specifications
- Applications
- Easy to understand technology breakdowns
- Customer testimonials



THE PREFERRED CONSTRUCTION TECHNOLOGY PARTNER