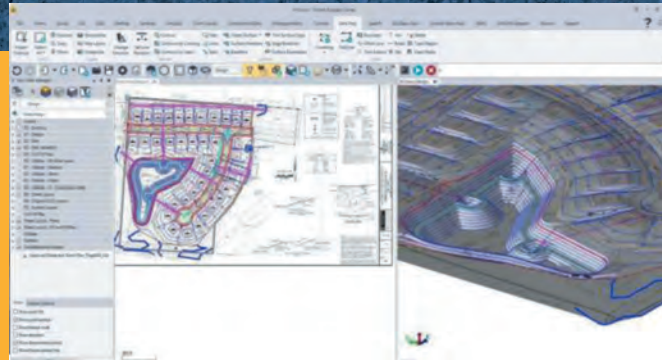
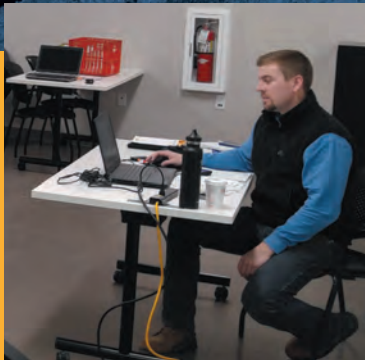


Learn: Trimble Business Center (TBC) BASICS

A virtual classroom led by live instructors for TBC BASICS

SITECH Northeast designed a class that will cover the basic topics of TBC delivered remotely to your computer. Our 2x-2 hour class sessions spaced two days apart will allow us to train on topics without being in a classroom and also avoid the dreaded data overload syndrome.



Cost: Attendance is \$160 per student/computer sign-on.

You must register in advance on-line at: www.sitechnortheast.com/events.

Each session begins promptly at 2:00 PM and concludes at 4:00 PM. Electronic course material will be provided along with a 10-day full license code and a certificate at the successful completion of the class.

Topics included but not limited to:

TBC BASICS – 4 Hours Total (Two 2-hour sessions)

- Installation, Updates, Licenses & Warranties – 30 min
- The User Interface: Navigating & Customizing Ribbons – 30 min
- New Projects, Templates, Saved Project Files – 15 min
- Importing Data – DXF/TTM/CSV – 45 min
- Navigating Views – 30 min
- Layer Manager – View Filters – 30 min
- Exporting Files & Construction Data – 1 hour



Click here to load the most current version of TBC on your computer **FOR FREE!**

Although this class is virtual, we have a **6 student limit** to ensure an appropriate teacher/student ratio. Please go on-line to register for each session.

www.sitechnortheast.com/events

Questions/Additional information? Contact: Sitechtraining@sitechnortheast.com



SITECH NORTHEAST

www.sitechnortheast.com

- Videos
- Product specifications
- Applications
- Easy to understand technology breakdowns
- Customer testimonials



THE PREFERRED CONSTRUCTION TECHNOLOGY PARTNER