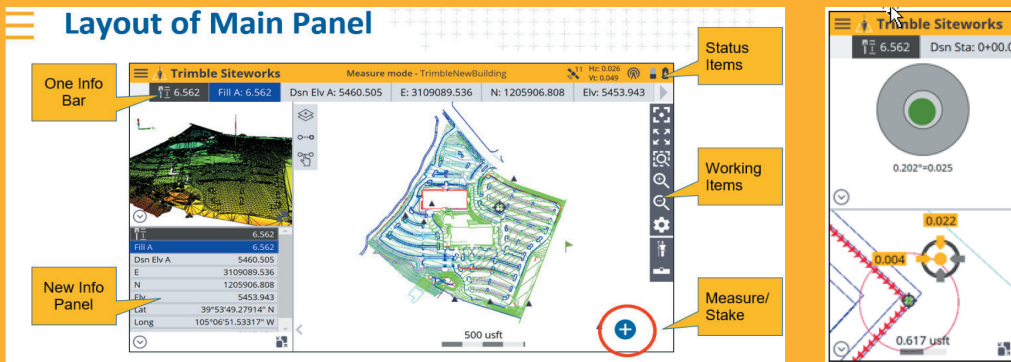


TRIMBLE SITEWORKS

A virtual classroom led by live instructors for Trimble SiteWorks

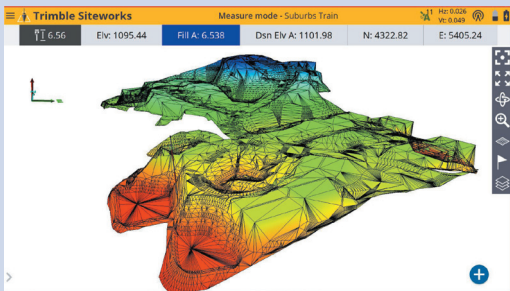
SITECH Northeast designed a class that will cover beginner, novice, and advanced topics delivered remotely to your computer. Our 4x-2 hour class sessions spaced a week apart will allow us to train on many topics without being in a classroom and also avoid the dreaded data overload syndrome.



Cost: Attendance is \$320 per student/computer sign-on.

You must register in advance on-line at: www.sitechnortheast.com/events.

Each session begins promptly at 2:00 PM and concludes at 4:00 PM. Electronic course material will be provided along with a 10-day full license code and a certificate at the successful completion of the class.



Topics included but not limited to:

- Open project (project, work order, design)
- Connecting your receiver (base, rover)
- Calibrating ebubble
- Checking into control
- Turning on tilt compensation
- Staking out a line (line settings, etc.)
- Measure mode (measuring point, line)
- CoGo some of the most used features
- Data management
- File extensions
- Asbuilt coding

Although this class is virtual, we have a **12 student limit** to ensure an appropriate teacher/student ratio. Please go on-line to register for each session.

www.sitechnortheast.com/events

Questions/Additional information? Contact: Sitechtraining@sitechnortheast.com



SITECH NORTHEAST

www.sitechnortheast.com

- Videos
- Product specifications
- Applications
- Easy to understand technology breakdowns
- Customer testimonials



THE PREFERRED CONSTRUCTION TECHNOLOGY PARTNER